



PROTECTOR SERIES

by

THE FIRE KNIGHT

THE FIRE KNIGHT PROTECTOR IS A UNIQUE FIRE DETECTION SYSTEM

Operating autonomously, the Protector system ensures peace of mind regardless of your location.

Capable of executing multiple functions simultaneously, the system swiftly identifies fires, activating itself instantly while promptly alerting the relevant authorities.



Each Protector system has the capability to identify, notify, and extinguish fires within medium to large spaces throughout your residence or workplace.

By utilising an encapsulating liquid fire suppressant instead of water, the Protector system achieves unparalleled effectiveness.

**A small investment
for peace of mind**

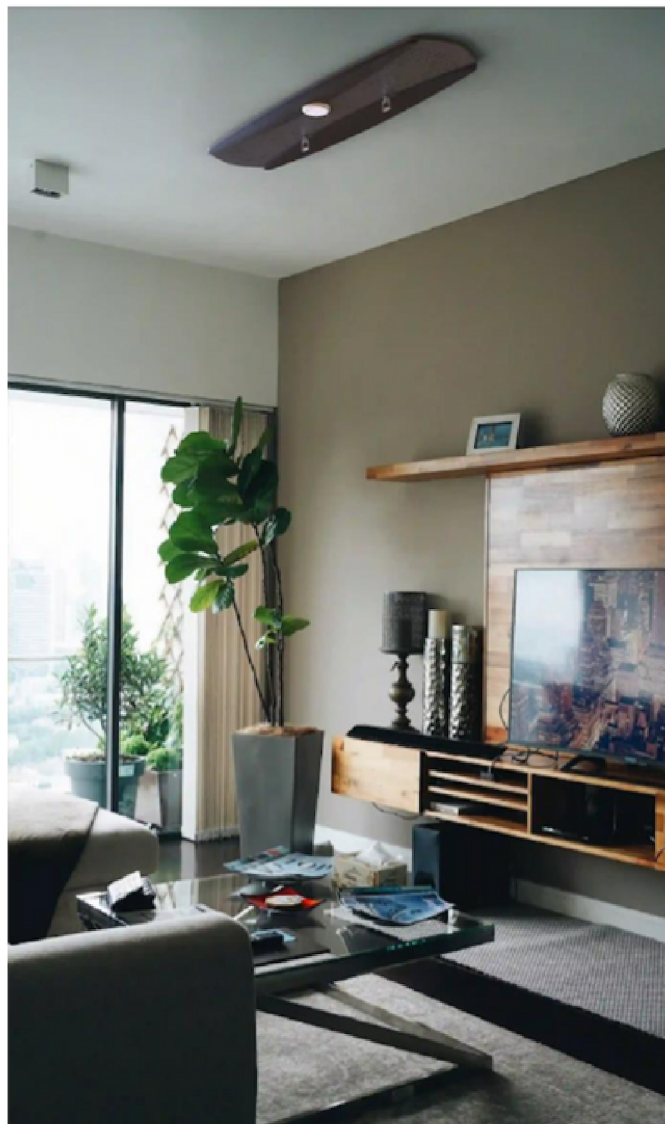


PROTECTOR SERIES

by

THE FIRE KNIGHT

Introducing the Fire Knight Protector System, a groundbreaking innovation safeguarding lives and assets through an automated fire suppression mechanism. By integrating advanced sensor technologies, it pre-emptively identifies potential hazards from gas and flames, triggering the system upon confirming the presence of a fire threat. This eradicates the nuisance of false alarms often triggered by conventional smoke detectors. Unlike traditional sprinkler systems that primarily react to extreme heat, our system ensures swift action, preventing situations where ceiling fires have already ignited by the time activation occurs.



OUR STRENGTHS

The Protector's unique system identifies flames in their nascent stages. Upon detecting a fire threat, an integrated camera captures an image pinpointing the fire's origin. Instantly transmitted to the command centre, this image prompts alerting the relevant authorities. Simultaneously, the Protector activates, deploying an environmentally friendly fluid to suppress or extinguish the fire before it can escalate. Consequently, the Fire Knight Protector conserves valuable community resources, such as fire, ambulance, and police, by minimising false alarms.



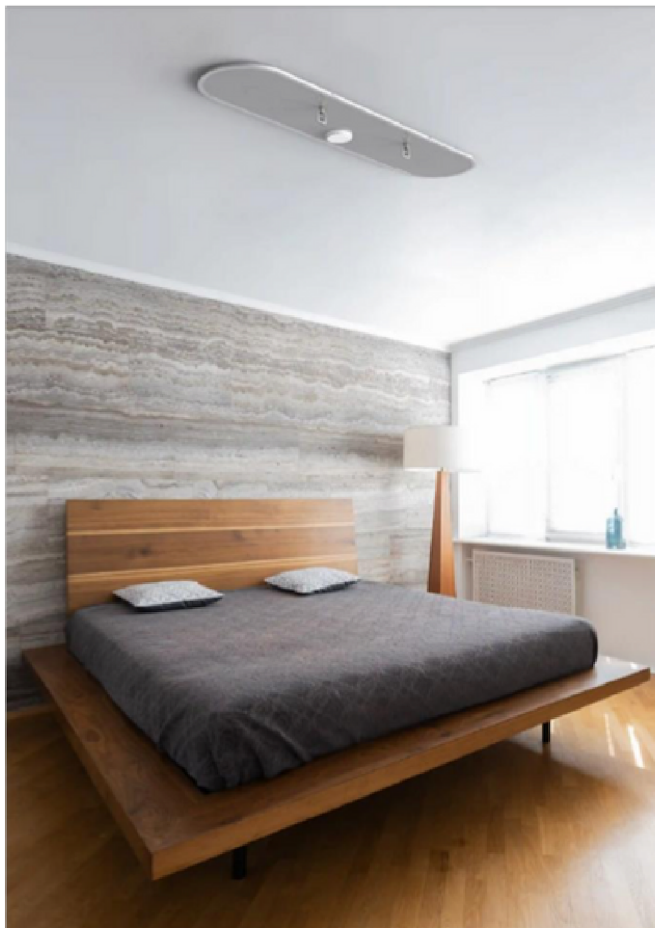
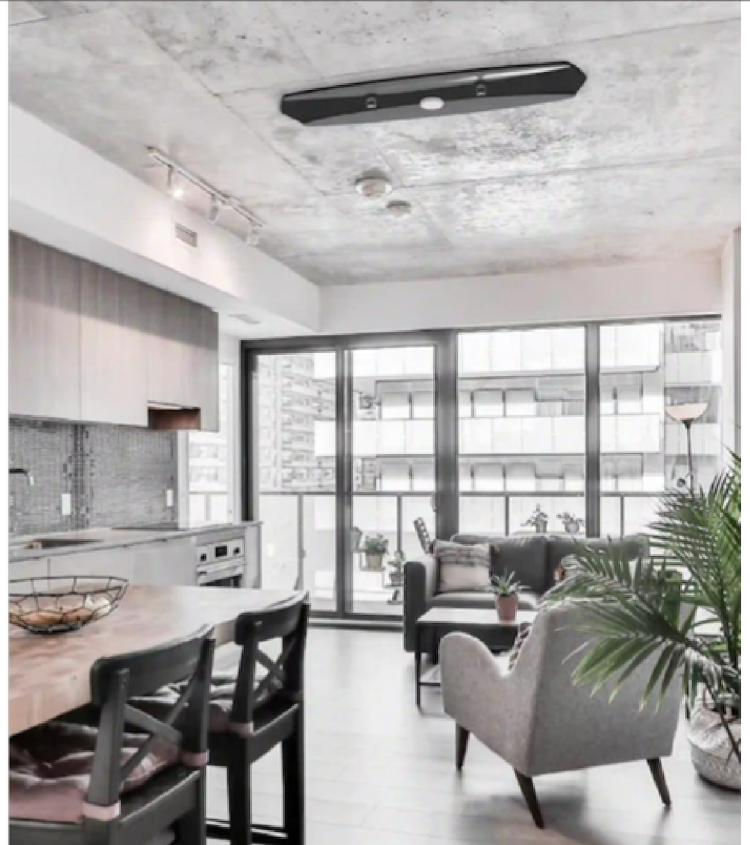
PROTECTOR SERIES

by
THE FIRE KNIGHT

SUPERIOR TECHNOLOGY

Integrated sensor technology seamlessly transmits notifications to the 24/7 manned command centre* upon activation. The Protector System employs a range of sensors, including flame sensors, gas sensors, Volatile Organic Compound (VOC) sensors, and rate of rise heat detectors, meticulously calibrated to detect potential threats.

Upon flame detection by the sensors, the system triggers the release of a blend of water and fire suppressant fluid. Subsequently, the system alerts the command centre as the primary point of contact, which in turn notifies emergency services and the registered contact of the home or business.



In the event of a gas or VOC sensor activation, the command centre initiates a call to the resident. Similarly, abnormal heat rise detected by rate of rise heat detectors prompts a call to the resident. The primary sensor, the flame sensor, is finely tuned to detect flames ranging from 200mm to half a metre in height, effectively avoiding false readings from smaller sources such as candles.

Utilising a built-in 4G LTE SIM module*, the system operates independently of home or private Wi-Fi networks, ensuring reliable connectivity in any circumstance. You have the option to select between 10 litre and/or 15 litre capacity variants to suit the size of your room.

Experience the assurance of a fully autonomous fire protection system, pre-filled with non-toxic, fully biodegradable fire suppressant.

*data cost to end user



PROTECTOR SERIES

by

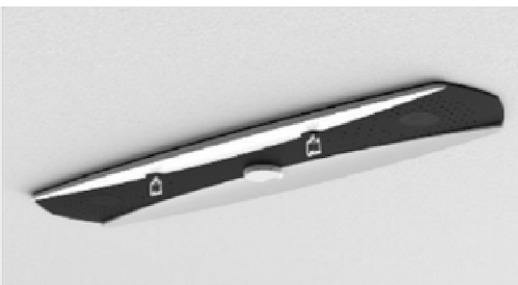
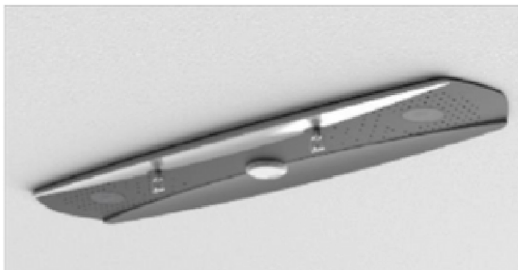
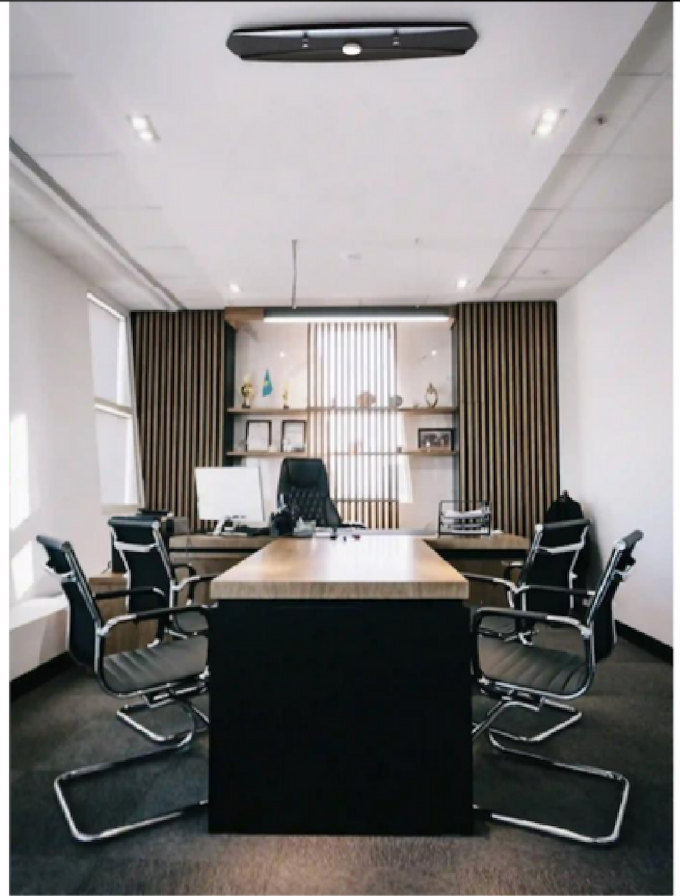
THE FIRE KNIGHT

Every resident or owner is provided with an app that keeps them informed about system alerts and maintenance needs. This app will send notifications with regards to necessary servicing*, and alerts generated by the system.

AESTHETICALLY APPEALING

The Fire Knight Protector system is meticulously crafted to seamlessly blend into any environment, be it the living room, primary bedroom, kitchen, or dining area. Its sleek, contemporary design facilitates effortless integration into both residential and commercial buildings. The Protector offers flexible installation options: it can be hardwired by a licensed electrical contractor or operated using its 10000mAh battery.

The Protector can be installed into existing buildings, or incorporated into house plans in the design process.



INSTALLATION IS EASY

For homeowners opting for battery operation, The Fire Knight Protector system can be self-installed without the need for electrical or water connections. The unit comes with detailed installation instructions for ease of setup. However, industry standards and government regulations mandate regular battery replacements and system maintenance.

Servicing procedures must adhere to the regulations of the customer's state, territory, and country. It is recommended to consult with your distribution agent regarding these requirements.

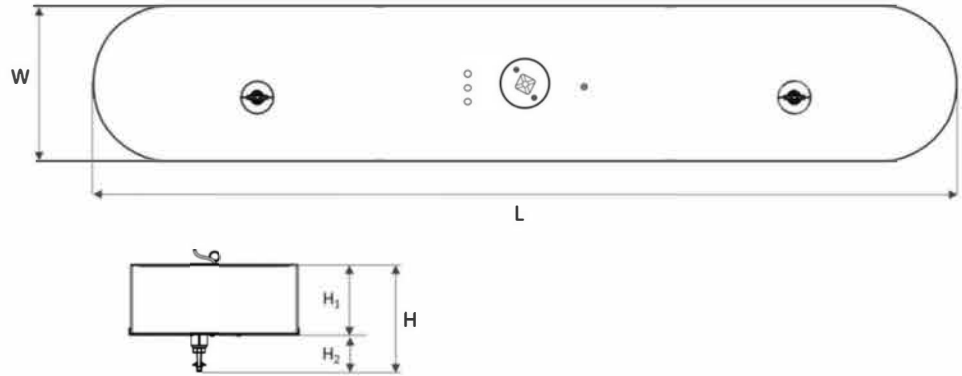
*service cost to end user



PROTECTOR SERIES

by

THE FIRE KNIGHT



Fire Rating Class:

Lithium-ion Battery Fires
 Class A Fires - Ordinary Combustibles
 Class B Fires - Flammable and Combustible Liquids
 Class F Fires - Cooking Oils and Fats (Limited)

Technical Specifications

| | MK03 | MK02 |
|---------------------------------|---|---|
| Model | MK03 | MK02 |
| Capacity | 15L | 10L |
| Fire Extinguisher Type | Water & Nitrogen | Water & Nitrogen |
| Expelling Agent | F500 encapsulator | F500 encapsulator |
| Extinguisher Design | Ceiling mounted | Ceiling mounted |
| Nozzle | 2x 120° <i>UL certified</i> | 1x 120° <i>UL certified</i> |
| Average Discharge Range | 6.5m x 3.5m | 3.5m x 3.5m |
| Average Discharge Time | 15-20 secs | 15-20 secs |
| Operating Temperature | Ambient | Ambient |
| Operating Pressure | 12 Bar | 12 Bar |
| Test Pressure | 18 Bar | 18 Bar |
| Operating Height | 2.4- 3.0m | 2.4- 3.0m |
| Test Specifications & Approvals | ASME sec. VIII Div-1 ASME sec. VIII Div-2 EN 13445 PD5500 AS3978:2003 (PROC 4085) AS4041:2006(6.8) ASME B31.3:2014 K345.4 ASME B31.3:2014 K345.5 | ASME sec. VIII Div-1 ASME sec. VIII Div-2 EN 13445 PD5500 AS3978:2003 (PROC 4085) AS4041:2006(6.8) ASME B31.3:2014 K345.4 ASME B31.3:2014 K345.5 |
| Dimensions | | |
| L | 1665mm | 1165mm |
| W | 310mm | 310mm |
| H | 225mm | 225mm |
| H ₁ | 145mm | 145mm |
| H ₂ | 80mm | 80mm |
| Total Weight | 44.5kg | 34.5kg |
| Battery | 2x 3.7V 10000mAh lithium-ion | 2x 3.7V 10000mAh lithium-ion |
| Adapter Power | 5V 3A AC 220V | 5V 3A AC 220V |
| Camera | Color CMOS 2.0 MegaPixel | Color CMOS 2.0 MegaPixel |
| Flame Sensor | 150,000V/M, 100° Wide Field | 150,000V/M, 100° Wide Field |
| VOC Sensor | MOx based, low power | MOx based, low power |
| Temperature Sensor | ±0.1 °C | ±0.1 °C |
| Cellular Communication | LTE Cat 1 module, suitable for LTE / GSM network and Wi-Fi option | LTE Cat 1 module, suitable for LTE / GSM network and Wi-Fi option |